



MUNDIAL

Industrial plugs and sockets

The MUNDIAL series is a set of power sockets for industrial uses. They are manufactured in accordance with the most demanding national and international standards so they can be distributed and installed in all markets. These parts undergo rigorous testing, thus guaranteeing all the required degrees of protection.

The sockets and plugs of this family are manufactured with high-durability halogen-free plastics and are available in a range of from 10 to 125 Amperes and from 24 to 500 Volts. Their ergonomic design greatly facilitates cable connection and installation.

They are intended for installation in places requiring power points for fixed machinery, portable tools or auxiliary electrical equipment. Their sphere of application therefore includes industrial premises and workshops, warehouses and depot areas, building sites, etc.



MUNDIAL Technical Specifications

- **Degree of protection:**
Schuko-type: IP44 / IP54 / IP66 / IP67 / IP68.
Low voltage: IP44 / IP66 / IP67.
Interlocking: IP44 / IP54 / IP67.
Extra low voltage: IP44.
- **Resistance to impact:** IK08.
- **Glow wire resistance:** 960 °C.
- **Ball pressure test:** 125 °C.
- **Ambient temperature range:** -25 °C / +40 °C.

MUNDIAL Certifications

Compliant with the Low Voltage Directive 2014/35/EU.
Standard: UNE-EN 60309-1, UNE-EN 60309-2 and IEC 60884-1 and Directive 2011/65/EU RoHS for Schuko-type sockets.

MUNDIAL



IDE sockets and plugs are designed for a maximum conductor section, as indicated in the following table:

Terminals

| Current (A) | Cross-section conductors | |
|-------------|--------------------------|-----------------------|
| | Flexible mm ² | Rigid mm ² |
| 16 | 4 | 6 |
| 32 | 6 | 10 |
| 63 | 16 | 25 |
| 125 | 50 | 70 |

Position of the earth contact (According to IEC 60309-2 - Series I)

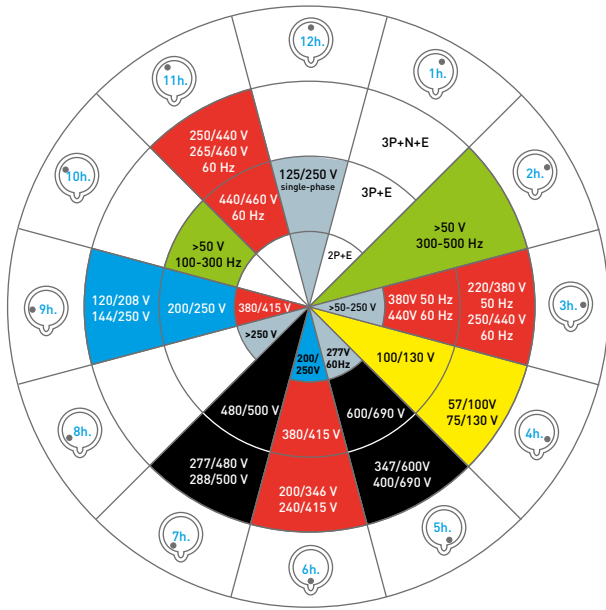
| Voltage (V) | Frequency (HZ) | 2P+E | | 3P+E | | 3P+N+E | |
|-------------------|----------------|---------|----------|---------|----------|---------|----------|
| | | 16-32 A | 63-125 A | 16-32 A | 63-125 A | 16-32 A | 63-125 A |
| 63.5/110 - 75/130 | 50/60 | - | - | - | - | 4 | 4 |
| 110 - 130 | 50/60 | 4 | 4 | 4 | 4 | - | - |
| 120/208 - 144/250 | 50/60 | - | - | - | - | 9 | 9 |
| 220 - 250 | 50/60 | 6 | 6 | 9 | 9 | - | - |
| 220/380 - 240/415 | 50/60 | - | - | - | - | 6 | 6 |
| 220/380 - 250/440 | 50/60 | - | - | - | - | 3 | 3* |
| 250/400 - 265/460 | 60 | - | - | - | - | 11 | 11 |
| 277 | 60 | 5 | 5 | - | - | - | - |
| 277/480 - 288/500 | 50/60 | - | - | - | - | 7 | 7 |
| 347/600 - 400/690 | 50/60 | - | - | - | - | 5 | 5 |
| 380 - 415 | 50/60 | 9 | 9 | 6 | 6 | - | - |
| 380 - 440 | 50/60 | - | - | 3 | 3* | - | - |
| 440 - 460 | 60 | - | - | 11 | 11 | - | - |
| 480 - 500 | 50/60 | 7 | 7 | 7 | 7 | - | - |
| 600 - 690 | 50/60 | - | - | 5 | 5 | - | - |
| >50 | 100/300 | 10* | 10* | 10 | 10* | 10* | 10* |
| >50 | <300/500 | 2 | 2* | 2 | 2* | 2 | 2* |
| >50 - 250 | DC | 3 | 3 | - | - | - | - |
| >250 | DC | 12 | 12 | 12 | 12 | - | - |

* NON-STANDARD

International colour and reference code

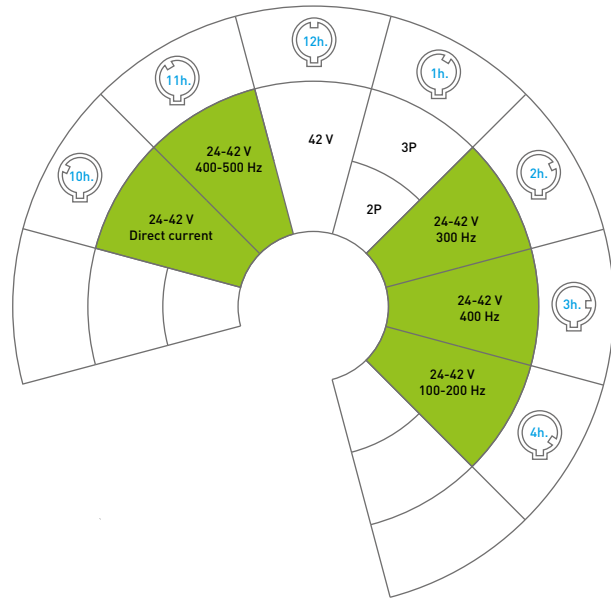
Low Voltage Elements

Earth contact according to the position clockwise from top.



Extra Low Voltage Elements

Auxiliary entry guide.



Colour code

| Voltage | Colour code |
|------------|-------------|
| 20-25 V | Violet |
| 40-50 V | White |
| 100-130 V | Yellow |
| 200-250 V | Blue |
| 380-480 V | Red |
| 500-690 V | Black |
| >60-500 Hz | Green |
| no code | Grey |

Codes showing the relationship between the number of poles, rated voltage, frequency, colour and time code that must be met by sockets manufactured in accordance with current regulations.

SCHUKO-TYPE

50/60 Hz industrial plugs and sockets

SCHUKO-TYPE PLUGS AND SOCKETS

Product series

- IP44 Schuko-type sockets.
- IP54 Schuko-type sockets.
- IP67 / IP68 Schuko-type sockets and plugs.
- IP44 rubber sockets and plugs.
- IP44 multiple socket.
- IP44 combo sockets and plugs.
- Current: 16 A.
- Voltage: 250 V.
- Poles: 2P+E.



IP54 FLUSH-FIT SOCKET



IP67 FLUSH-FIT SOCKET



IP67 WALL SOCKET



IP66-IP68 WANDER SOCKET

Material

- Plastic parts: Polyamide 6.
- Contacts: Copper-zinc alloy.
- Halogen-free plastic materials.
- High disruptive force.
- High resistance to extreme environmental agents.
- High resistance to chemical products and agents.

Main characteristics of the plastic material:

- Excellent resistance to impact.
- High thermal stability.
- Very good insulating qualities.

Main characteristics of the contacts:

- High-capacity electrical conduction: 15 mm²/(Ohm mm²).
- High corrosion resistance in industrial areas.

Supply

- Supplied in a single box per packaging multiple.

VERSIONS FOR IP54 SCHUKO-TYPE SOCKETS



WITH SCREWS



SCREWLESS



WITH SIDE
EARTH



FRENCH-TYPE



IP44-IP54-IP67-IP68 Schuko-type sockets

- Broad range of Schuko-type sockets and plugs:
- IP44 Schuko-type sockets available in flush-fit and surface version.
 - The IP54 Schuko-type sockets are always supplied with a shutter. They are available with a terminal with screws or a screwless terminal. They are also available in the French version.
 - The IP67 Schuko-type sockets can be flush-fitted, wall-mounted, or as a wander socket and plug, thus delivering a full range of solutions.

Cable entry for IP54 sockets

- Screw-free cable connection allows the cables to enter in both directions (side and rear).
- The sockets can use flexible and rigid class I and class II cable, as well as treated and untreated Class II.

Shutter

- The Schuko-type sockets supplied with shutter deliver an additional safety system by covering the contact entry and preventing access by any foreign body other than a plug.

Broad range of Schuko-type sockets and plugs for global solutions



Covers

- 180° cover opening.
- Geometric forms that provide excellent rigidity and a personalised look for parts.

Rubber plugs and sockets

- The rubber wander sockets and plugs are available with an IP54 degree of protection.
- Manufactured in rubber, they provide perfect grip and maximum strength.
- They have a large connection area and a simple contact assembly and disassembly system.
- Cables with diameters of between 6 and 13 mm can be installed.

SCHUKO-TYPE

50/60 Hz industrial plugs and sockets

IP44 Schuko-type sockets



IP44 flush-fit socket



IP44 wall socket

| Current | Poles | Volt. (V) | Time code | Reference No. | Reference No. |
|---------|-------|-----------|-----------|----------------|----------------|
| 16A | 2P+E | 250 | - | 00101 00102 | 00103 00104 |

Sockets with screw terminal and lateral contact.

IP54 Schuko-type sockets



IP54 socket with shutter

With screw terminal
Type: SK54 LAT/CT



With screwless
terminal



IP54 French socket with shutter

With screw terminal
Type: SK54 PIN/CT



With screwless
terminal

| Current | Poles | Volt. (V) | Time code | Reference No. | Reference No. | Reference No. | Reference No. |
|---------|-------|-----------|-----------|----------------|---------------|---------------|---------------|
| 16A | 2P+E | 250 | - | 00456 00452 | - 00402 | - 00464 | - 00414 |

IP66-IP67-IP68 Schuko-type sockets and plugs



IP67 flush-fit socket*



IP67 wall socket*



IP66-IP68
wander socket



IP66-IP68
wander plug

| Current | Poles | Volt. (V) | Time code | Reference No. | Reference No. | Reference No. | Reference No. |
|---------|-------|-----------|-----------|----------------|---------------|---------------|---------------|
| 16A | 2P+E | 250 | - | 00105 00164 | 00135 - | 00118 - | 00114 - |

See dimensions on pages: 8-9.

* Ref. 00105-00135 with lateral contact. Ref. 00164 with type-PIN contact.

Rubber sockets and plugs



IP54 rubber wander plug



IP20 rubber wander socket



IP44 multiple rubber socket

| Current | Poles | Volt. (V) | Time code | Reference No. | Reference No. | Reference No. |
|---------|-------|-----------|-----------|---------------|------------------|---------------|
| 16A | 2P+E | 250 | - | 00115 | 00125 00125/F | 00130 |

Reference 00115 with dual earthing system. Reference 00125/F with French/Belgian system.

IP44 combo sockets and plugs



IP44 combo sockets



IP44 combo plugs

| Current | Poles | Voltage (V) | Time code | Reference No. | Reference No. |
|---------|--------|-------------------|-----------|---------------|---------------|
| 16A | 2P+E | 200/250 | 6 | 00211 | 00121 |
| | 3P+E | 380/415 | 6 | 00312 | - |
| | 3P+N+E | 200/346 - 240/415 | 6 | 00313 | 00123 |
| 32A | 2P+E | 200/250 | 6 | 00214 | - |
| | 3P+E | 380/415 | 6 | 00315 | - |
| | 3P+N+E | 200/346 - 240/415 | 6 | 00316 | - |

IP44 multiple socket



| Current | Poles | Voltage (V) | Time code | Reference No. | |
|---------|-------|-------------|-----------|--------------------|-------|
| 16A | 2P+E | 230 | - | 1 plug + 3 sockets | 00140 |

Data socket



| Description | Reference No. |
|---|---------------|
| Network socket housing (for two RJ45 sockets). 50x50 mm | 00145 |
| Network socket connector 6A Keystone Jack RJ45 STP | 00146 |

Both references must be requested to obtain the full set.

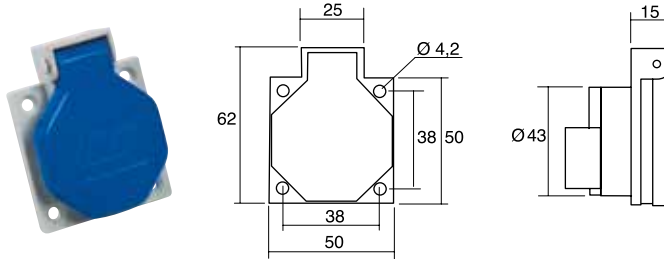
See dimensions on pages: 10-11.

SCHUKO-TYPE

50/60 Hz industrial plugs and sockets dimensions

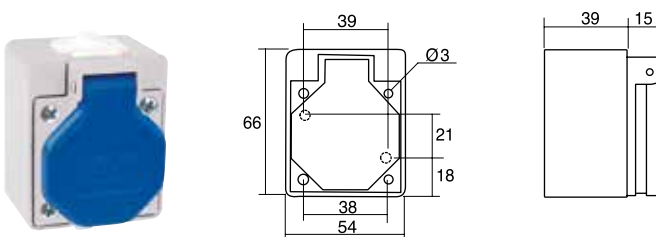
DIMENSIONS

IP44 Schuko-type flush-fit socket



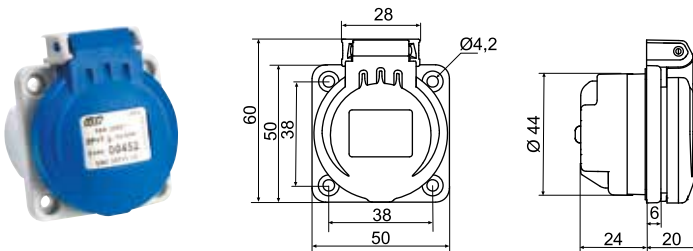
| Current | Poles | Dimensions | | |
|---------|-------|------------|-------|-------|
| | | HEIGHT | WIDTH | DEPTH |
| 16A | 2P+E | 62 | 50 | 40 |

IP44 Schuko-type wall socket



| Current | Poles | Dimensions | | |
|---------|-------|------------|-------|-------|
| | | HEIGHT | WIDTH | DEPTH |
| 16A | 2P+E | 66 | 54 | 54 |

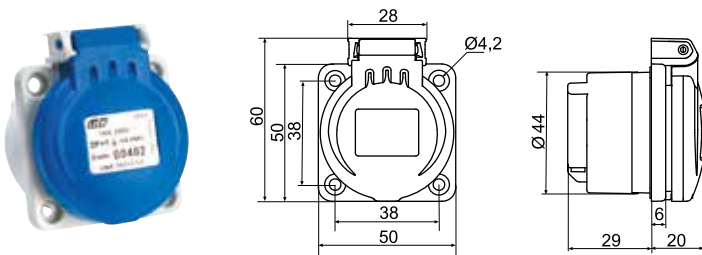
IP54 Schuko-type flush-fit sockets with shutter and screw terminal



| Current | Poles | Dimensions | | |
|---------|-------|------------|-------|-------|
| | | HEIGHT | WIDTH | DEPTH |
| 16A | 2P+E | 60 | 50 | 44 |

Flush-fit gap: $\varnothing 4^{+0}_{-0.5}$

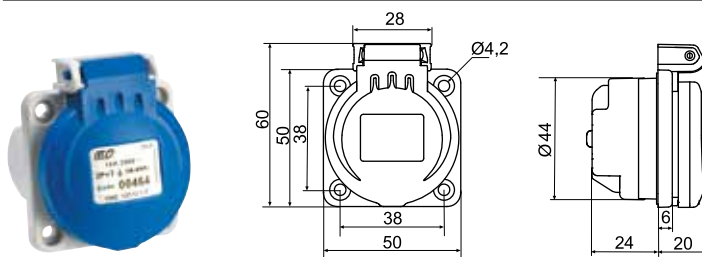
IP54 Schuko-type flush-fit sockets with shutter and screwless terminal



| Current | Poles | Dimensions | | |
|---------|-------|------------|-------|-------|
| | | HEIGHT | WIDTH | DEPTH |
| 16A | 2P+E | 60 | 50 | 49 |

Flush-fit gap: $\varnothing 4^{+0}_{-0.5}$

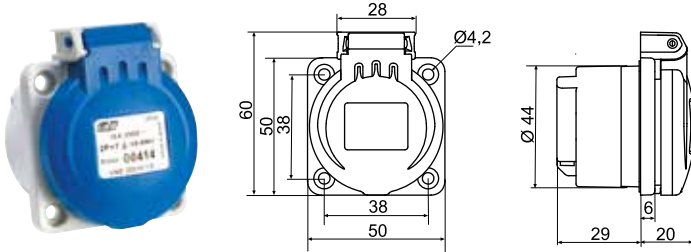
IP54 Schuko-type French-type sockets with shutter and screw terminal



| Current | Poles | Dimensions | | |
|---------|-------|------------|-------|-------|
| | | HEIGHT | WIDTH | DEPTH |
| 16A | 2P+E | 60 | 50 | 44 |

Flush-fit gap: $\varnothing 4^{+0}_{-0.5}$

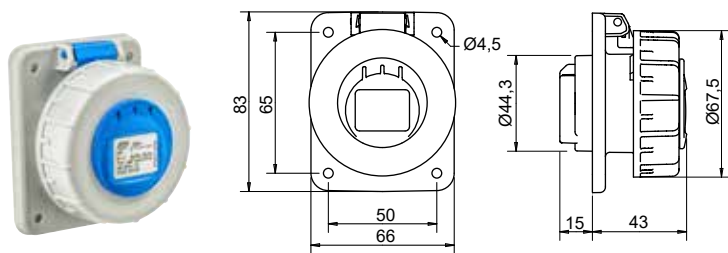
IP54 Schuko-type French-type sockets with shutter and screwless terminal



| Current | Poles | Dimensions | | |
|---------|-------|------------|-------|-------|
| | | HEIGHT | WIDTH | DEPTH |
| 16A | 2P+E | 60 | 50 | 49 |

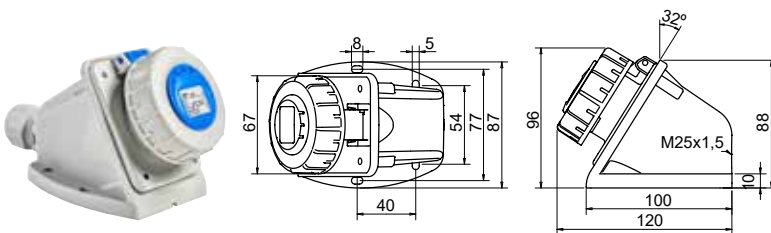
Flush-fit gap: $\varnothing 4^{+0}_{-0.5}$

IP66-IP67 Schuko-type flush-fit sockets



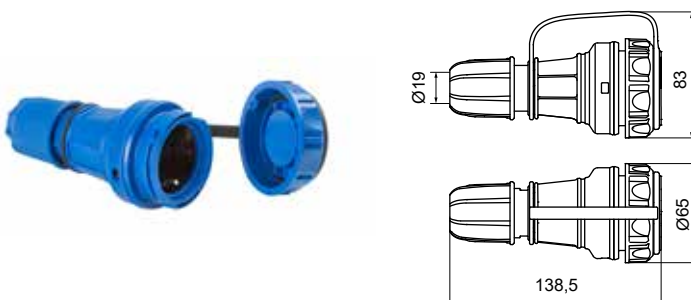
| Current | Poles | Dimensions | | |
|---------|-------|------------|-------|-------|
| | | HEIGHT | WIDTH | DEPTH |
| 16A | 2P+E | 83 | 66 | 58 |

IP67 Schuko-type wall sockets



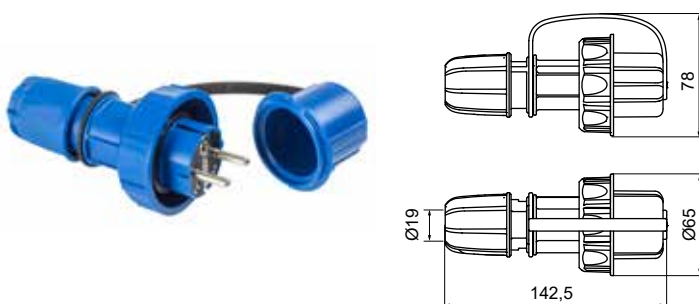
| Current | Poles | Dimensions | | |
|---------|-------|------------|-------|-------|
| | | HEIGHT | WIDTH | DEPTH |
| 16A | 2P+E | 96 | 87 | 120 |

IP66-IP68 Schuko-type wander socket



| Current | Poles | Dimensions | |
|---------|-------|------------|----|
| | | LENGTH | Ø |
| 16A | 2P+E | 139 | 65 |

IP66-IP68 Schuko-type wander plug

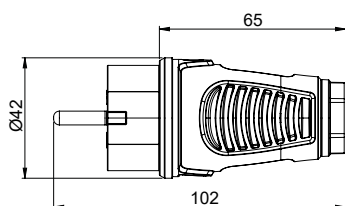


| Current | Poles | Dimensions | |
|---------|-------|------------|----|
| | | LENGTH | Ø |
| 16A | 2P+E | 143 | 65 |

SCHUKO-TYPE

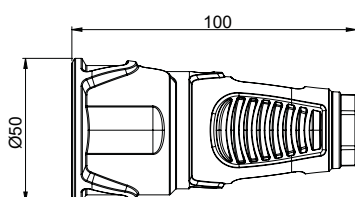
50/60 Hz industrial plugs and sockets dimensions

IP54 rubber wander plug



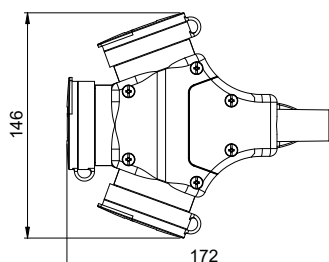
| Current | Poles | Dimensions | |
|---------|-------|------------|----|
| | | LENGTH | Ø |
| 16A | 2P+E | 102 | 42 |

IP20 rubber wander socket



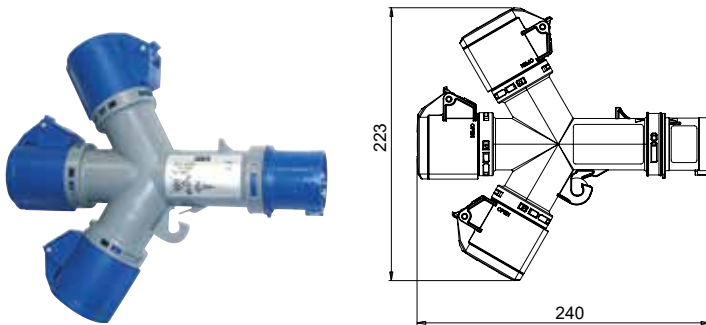
| Current | Poles | Dimensions | |
|---------|-------|------------|----|
| | | LENGTH | Ø |
| 16A | 2P+E | 100 | 50 |

IP44 multiple rubber socket



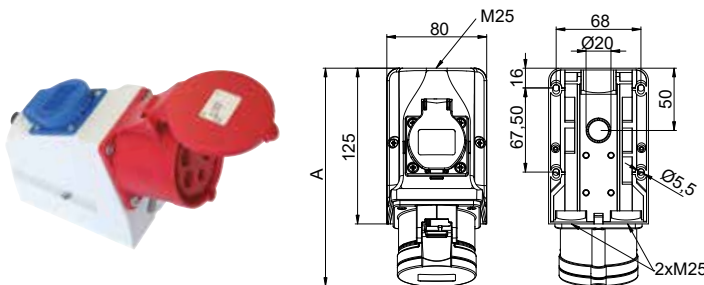
| Current | Poles | Dimensions | |
|---------|-------|------------|--------|
| | | LENGTH | HEIGHT |
| 16A | 2P+E | 172 | 146 |

IP44 multiple socket



| Current | Poles | Dimensions | |
|---------|-------|------------|--------|
| | | LENGTH | HEIGHT |
| 16A | 2P+E | 240 | 223 |

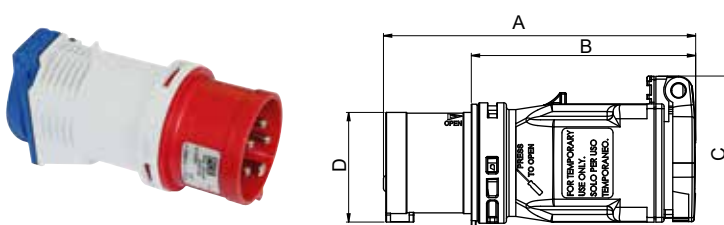
IP44 combo socket



B= Height:
15°= Slope

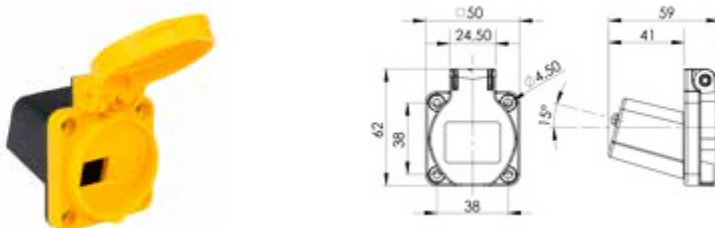
| Current | Poles | Dimensions | | |
|---------|--------|------------|-----|------|
| | | A | B | M |
| 16A | 2P+E | 175 | 127 | 3x25 |
| | 3P+E | 176 | 130 | 3x25 |
| | 3P+N+E | 176 | 133 | 3x25 |
| 32A | 2P+E | 188 | 136 | 3x25 |
| | 3P+E | 188 | 136 | 3x25 |
| | 3P+N+E | 188 | 141 | 3x25 |

IP44 combo plug



| Current | Poles | Dimensions | | | |
|---------|--------|------------|----|----|----|
| | | A | B | C | D |
| 16A | 2P+E | 134 | 96 | 65 | 47 |
| | 3P+N+E | 133 | 96 | 74 | 61 |

Data socket



LOW VOLTAGE

50/60 Hz industrial plugs and sockets

LOW VOLTAGE PLUGS AND SOCKETS

IP44 product series

- Wander sockets.
- Straight flush-fit sockets.
- Sloping flush-fit sockets.
- Wall sockets.
- Wander plugs.
- Straight flush-fit plugs.
- Wall plugs.
- Phase inverters.
- Current: 16 A – 32 A.
- Voltage: 110V – 220V – 380V – 500V.
- Poles: 2P+E – 3P+E – 3P+N+E.
- Time code: 2h – 4h – 6h – 7h – 9h – 10h.

IP67 product series

- Wander sockets.
- Sloping flush-fit sockets.
- Wall sockets.
- Wander plugs.
- Sloping flush-fit plugs.
- Wall plugs.
- Phase inverters.
- Current: 16 A – 32 A – 63 A – 125 A.
- Voltage: 110V – 220V – 380V – 500V.
- Poles: 2P+E – 3P+E – 3P+N+E.
- Time code: 2h – 4h – 6h – 7h – 9h – 10h.



IP44 WANDER PLUG



IP44 WALL SOCKET



IP67 FLUSH-FIT SOCKET



IP67 FLUSH-FIT PLUG

Material

- Plastic parts: Polyamide 6.
- Contacts: Copper-zinc alloy.
- Halogen-free plastic materials.

Main characteristics of the plastic material:

- Excellent resistance to impact.
- High thermal stability.
- Very good insulating qualities.
- High disruptive force.
- High resistance to extreme environmental agents.
- High resistance to chemical products and agents.

Main characteristics of the contacts:

- High-capacity electrical conduction: 15 mm/(Ohm mm²).
- High corrosion resistance in industrial areas.
- Possibility of requesting nickel-plated contacts to increase resistance in marine, steamy environments, etc. (Add /NC to the reference).

Supply

Supplied in an individual box per packaging multiple.

IP
44IP
67

CE



Wander socket and plug

- They feature an ergonomic design that makes it extremely easy for the installer to hold and handle them.
- The cable hose is secured by means of a cable gland system that guarantees total protection against the entry of water and solid bodies.
- Clipping system opening and closing, with a tool required to access live parts, in compliance with regulations.
- Easy access to cable connection thanks to screws on the side facing in the same direction.

Ergonomic design that facilitates holding and handling



Cover

- It features geometric forms that provide it with excellent rigidity and resistance to knocks and handling. There are three recesses at the top which become connection ribs with the opening and rotation tab.
- 180° cover opening and rotation, thus providing total and unlimited opening.
- The IP67 sockets and plugs have a ring that guarantees their degree of protection.

Shield for flush-fit sockets

- Four unique shield sizes. Two for 16 A and 32 A sockets and two for 63 A and 125 A sockets.

Wall sockets

- The IP44 wall sockets have a threaded cap and the IP67 sockets a cable gland to guarantee their degree of protection.
- They have threaded holes for wall-mounting that facilitate installation and levelling.

LOW VOLTAGE

50/60 Hz industrial plugs and sockets

IP44 low voltage sockets



| Current | Poles | Voltage (V) | Time code | Straight flush-fit sockets | | | | Sloping flush-fit sockets | | | | Wall sockets | | | | Wander sockets | | | |
|-----------------|--------|-----------------|-----------|----------------------------|---------------|---------------|---------------|---------------------------|---------------|---------------|---------------|---------------|---------------|---------------|---------------|----------------|--|--|--|
| | | | | Reference No. | Reference No. | Reference No. | Reference No. | Reference No. | Reference No. | Reference No. | Reference No. | Reference No. | Reference No. | Reference No. | Reference No. | | | | |
| 16A | 2P+E | >50(301-500Hz) | 2 | █ | - | 07301 | 07321 | 07201 | | | | | | | | | | | |
| | | 100/130 | 4 | █ | 01311 | 01301 | 01321 | 01201 | | | | | | | | | | | |
| | | 200/250 | 6 | █ | 02311 | 02301 | 02321 | 02201 | | | | | | | | | | | |
| | | 480/500 | 7 | █ | - | 05301 | 05321 | 05201 | | | | | | | | | | | |
| | 3P+E | 380/415 | 9 | █ | 03311 | 03301 | 03321 | 03201 | | | | | | | | | | | |
| | | >50(301-500Hz) | 2 | █ | - | 07302 | 07322 | 07202 | | | | | | | | | | | |
| | | 100/130 | 4 | █ | 01312 | 01302 | 01322 | 01202 | | | | | | | | | | | |
| | | 380/415 | 6 | █ | 03312 | 03302 | 03322 | 03202 | | | | | | | | | | | |
| | 3P+N+E | 480/500 | 7 | █ | 05312 | 05302 | 05322 | 05202 | | | | | | | | | | | |
| | | 200/250 | 9 | █ | 02312 | 02302 | 02322 | 02202 | | | | | | | | | | | |
| | | >50(100-300Hz) | 10 | █ | - | 07382 | 07352 | 07282 | | | | | | | | | | | |
| | | >50(301-500Hz) | 2 | █ | - | 07303 | 07323 | 07203 | | | | | | | | | | | |
| | 3P+N+E | 57/100 75/130 | 4 | █ | 01313 | 01303 | 01323 | 01203 | | | | | | | | | | | |
| | | 200/346 240/415 | 6 | █ | 03313 | 03303 | 03323 | 03203 | | | | | | | | | | | |
| 277/480 288/500 | | 7 | █ | 05313 | 05303 | 05323 | 05203 | | | | | | | | | | | | |
| 120/208 144/250 | | 9 | █ | 02313 | 02303 | 02323 | 02203 | | | | | | | | | | | | |
| >50(301-500Hz) | | 2 | █ | - | 07304 | 07324 | 07204 | | | | | | | | | | | | |
| 100/130 | | 4 | █ | 01314 | 01304 | 01324 | 01204 | | | | | | | | | | | | |
| 32A | 2P+E | 200/250 | 6 | █ | 02314 | 02304 | 02324 | 02204 | | | | | | | | | | | |
| | | 480/500 | 7 | █ | - | 05304 | 05324 | 05204 | | | | | | | | | | | |
| | | 380/415 | 9 | █ | 03314 | 03304 | 03324 | 03204 | | | | | | | | | | | |
| | | >50(301-500Hz) | 2 | █ | - | 07305 | 07325 | 07205 | | | | | | | | | | | |
| | 3P+E | 100/130 | 4 | █ | 01315 | 01305 | 01325 | 01205 | | | | | | | | | | | |
| | | 380/415 | 6 | █ | 03315 | 03305 | 03325 | 03205 | | | | | | | | | | | |
| | | 480/500 | 7 | █ | 05315 | 05305 | 05325 | 05205 | | | | | | | | | | | |
| | | 200/250 | 9 | █ | 02315 | 02305 | 02325 | 02205 | | | | | | | | | | | |
| | 3P+N+E | >50(100-300Hz) | 10 | █ | - | 07385 | 07395 | 07285 | | | | | | | | | | | |
| | | >50(301-500Hz) | 2 | █ | - | 07306 | 07326 | 07206 | | | | | | | | | | | |
| | | 57/100 75/130 | 4 | █ | 01316 | 01306 | 01326 | 01206 | | | | | | | | | | | |
| | | 200/346 240/415 | 6 | █ | 03316 | 03306 | 03326 | 03206 | | | | | | | | | | | |
| | | 277/480 288/500 | 7 | █ | 05316 | 05306 | 05326 | 05206 | | | | | | | | | | | |
| | | 120/208 144/250 | 9 | █ | 02316 | 02306 | 02326 | 02206 | | | | | | | | | | | |

Available with nickel-plated contacts for marine environments. Ask us about price and delivery terms.
See dimensions on pages: 18-19.



IP44 low voltage plugs



| Current | Poles | Voltage (V) | Time code | Wander plugs | Straight flush-fit plugs | Wall plugs | |
|-----------------|--------|-----------------|-----------|---------------|--------------------------|---------------|-------|
| | | | | Reference No. | Reference No. | Reference No. | |
| 16A | 2P+E | >50(301-500Hz) | 2 | | 07101 | - | - |
| | | 100/130 | 4 | | 01101 | 01111 | 01121 |
| | | 200/250 | 6 | | 02101 | 02111 | 02121 |
| | | 480/500 | 7 | | 05101 | - | - |
| | | 380/415 | 9 | | 03101 | 03111 | 03121 |
| | 3P+E | >50(301-500Hz) | 2 | | 07102 | - | - |
| | | 100/130 | 4 | | 01102 | 01112 | 01122 |
| | | 380/415 | 6 | | 03102 | 03112 | 03122 |
| | | 480/500 | 7 | | 05102 | 05112 | 05122 |
| | | 200/250 | 9 | | 02102 | 02112 | 02122 |
| | 3P+N+E | >50(100-300Hz) | 10 | | 07182 | - | - |
| | | >50(301-500Hz) | 2 | | 07103 | - | - |
| | | 57/100 75/130 | 4 | | 01103 | 01113 | 01123 |
| | | 200/346 240/415 | 6 | | 03103 | 03113 | 03123 |
| 277/480 288/500 | | 7 | | 05103 | 05113 | 05123 | |
| 120/208 144/250 | | 9 | | 02103 | 02113 | 02123 | |
| 32A | 2P+E | >50(301-500Hz) | 2 | | 07104 | - | - |
| | | 100/130 | 4 | | 01104 | 01114 | 01124 |
| | | 200/250 | 6 | | 02104 | 02114 | 02124 |
| | | 480/500 | 7 | | 05104 | - | - |
| | | 380/415 | 9 | | 03104 | 03114 | 03124 |
| | 3P+E | >50(301-500Hz) | 2 | | 07105 | - | - |
| | | 100/130 | 4 | | 01105 | 01115 | 01125 |
| | | 380/415 | 6 | | 03105 | 03115 | 03125 |
| | | 480/500 | 7 | | 05105 | 05115 | 05125 |
| | | 200/250 | 9 | | 02105 | 02115 | 02125 |
| | 3P+N+E | >50(100-300Hz) | 10 | | 07185 | - | - |
| | | >50(301-500Hz) | 2 | | 07106 | - | - |
| | | 57/100 75/130 | 4 | | 01106 | 01116 | 01126 |
| | | 200/346 240/415 | 6 | | 03106 | 03116 | 03126 |
| | | 277/480 288/500 | 7 | | 05106 | 05116 | 05126 |
| | | 120/208 144/250 | 9 | | 02106 | 02116 | 02126 |

See dimensions on page: 19.

IP44-IP67 phase inverter connectors



IP44 phase inverter

IP67 phase inverter

| Current | Poles | Voltage (V) | Time code | Reference No. | Reference No. | |
|---------|--------|-------------------|-----------|---------------|---------------|-------|
| 16A | 3P+E | 200/250 | 9 | | 08509 | 08510 |
| | 3P+E | 380/415 | 6 | | 08501 | 08505 |
| | 3P+N+E | 200/346 - 240/415 | 6 | | 08502 | 08506 |
| 32A | 3P+E | 200/250 | 9 | | 08511 | 08512 |
| | 3P+E | 380/415 | 6 | | 08503 | 08507 |
| | 3P+N+E | 200/346 - 240/415 | 6 | | 08504 | 08508 |

LOW VOLTAGE

50/60 Hz industrial plugs and sockets

IP66-IP67 low voltage sockets



| I | Poles | Voltage (V) | Time code | Sloping flush-fit sockets | | Wall sockets | | Wander sockets | |
|-----------------|-----------------|-----------------|-----------|---------------------------|---------------|---------------|---------------|----------------|--------|
| | | | | Reference No. | Reference No. | Reference No. | Reference No. | | |
| 16A | 2P+E | >50(301-500Hz) | 2 | 07801 | 07821 | 07701 | | | |
| | | 100/130 | 4 | 01801 | 01821 | 01701 | | | |
| | | 200/250 | 6 | 02801 | 02821 | 02701 | | | |
| | | 480/500 | 7 | 05801 | 05821 | 05701 | | | |
| | | 380/415 | 9 | 03801 | 03821 | 03701 | | | |
| | 3P+E | >50(301-500Hz) | 2 | 07802 | 07822 | 07702 | | | |
| | | 100/130 | 4 | 01802 | 01822 | 01702 | | | |
| | | 380/415 | 6 | 03802 | 03822 | 03702 | | | |
| | | 480/500 | 7 | 05802 | 05822 | 05702 | | | |
| | | 200/250 | 9 | 02802 | 02822 | 02702 | | | |
| | 3P+N+E | >50(100-300Hz) | 10 | 07882 | 07892 | 07782 | | | |
| | | >50(301-500Hz) | 2 | 07803 | 07823 | 07703 | | | |
| | | 57/100 75/130 | 4 | 01803 | 01823 | 01703 | | | |
| | | 200/346 240/415 | 6 | 03803 | 03823 | 03703 | | | |
| 277/480 288/500 | | 7 | 05803 | 05823 | 05703 | | | | |
| | | 120/208 144/250 | 9 | 02803 | 02823 | 02703 | | | |
| 32A | 2P+E | >50(301-500Hz) | 2 | 07804 | 07824 | 07704 | | | |
| | | 100/130 | 4 | 01804 | 01824 | 01704 | | | |
| | | 200/250 | 6 | 02804 | 02824 | 02704 | | | |
| | | 480/500 | 7 | 05804 | 05824 | 05704 | | | |
| | | 380/415 | 9 | 03804 | 03824 | 03704 | | | |
| | 3P+E | >50(301-500Hz) | 2 | 07805 | 07825 | 07705 | | | |
| | | 440 (60Hz) | 3 | 07815 | 07835 | 07715 | | | |
| | | 100/130 | 4 | 01805 | 01825 | 01705 | | | |
| | | 380/415 | 6 | 03805 | 03825 | 03705 | | | |
| | | 480/500 | 7 | 05805 | 05825 | 05705 | | | |
| | 3P+N+E | 200/250 | 9 | 02805 | 02825 | 02705 | | | |
| | | >50(100-300Hz) | 10 | 07885 | 07895 | 07785 | | | |
| | | >50(301-500Hz) | 2 | 07806 | 07826 | 07706 | | | |
| | | 57/100 75/130 | 4 | 01806 | 01826 | 01706 | | | |
| 200/346 240/415 | | 6 | 03806 | 03826 | 03706 | | | | |
| | | 277/480 288/500 | 7 | 05806 | 05826 | 05706 | | | |
| | | 120/208 144/250 | 9 | 02806 | 02826 | 02706 | | | |
| 63A | 2P+E | 100/130 | 4 | 01851 | 01871 | 01751 | | | |
| | | 200/250 | 6 | 02851 | 02851P | 02871 | 02871P | 02751 | 02751P |
| | 3P+E | 380/415 | 6 | 03852 | 03852P | 03872 | 03872P | 03752 | 03752P |
| | | 480/500 | 7 | 05852 | | 05872 | | 05752 | |
| | | 200/250 | 9 | 02852 | | 02872 | | 02752 | |
| 3P+N+E | 200/346 240/415 | 6 | 03853 | 03853P | 03873 | 03873P | 03753 | 03753P | |
| 125A | 2P+E | 100/130 | 4 | 01854 | | 01874 | | 01754 | |
| | | 200/250 | 6 | 02854 | 02854P | 02874 | 02874P | 02754 | 02754P |
| | 3P+E | 380/415 | 6 | 03855 | 03855P | 03875 | 03875P | 03755 | 03755P |
| | | 480/500 | 7 | 05855 | | 05875 | | 05755 | |
| | | 200/250 | 9 | 02855 | | 02875 | | 02755 | |
| 3P+N+E | 200/346 240/415 | 6 | 03856 | 03856P | 03876 | 03876P | 03756 | 03756P | |

Available with nickel-plated contacts for marine environments. Ask us about price and delivery terms.

See dimensions on pages: 20-21.

P: Sockets with pilot contact.



IP66-IP67 low voltage plugs



| I | Poles | Voltage (V) | Time code | Wander plugs | | | |
|-----------------|-----------------|-----------------|-----------|---------------|------------------|---------------|------------|
| | | | | Reference No. | Flush-fit plugs* | Reference No. | Wall plugs |
| 16A | 2P+E | >50(301-500Hz) | 2 | | 07601 | - | - |
| | | 100/130 | 4 | | 01601 | 01611 | 01621 |
| | | 200/250 | 6 | | 02601 | 02611 | 02621 |
| | | 480/500 | 7 | | 05601 | - | - |
| | | 380/415 | 9 | | 03601 | - | - |
| | 3P+E | >50(301-500Hz) | 2 | | 07602 | - | - |
| | | 100/130 | 4 | | 01602 | - | - |
| | | 380/415 | 6 | | 03602 | 03612 | 03622 |
| | | 480/500 | 7 | | 05602 | 05612 | 05622 |
| | | 200/250 | 9 | | 02602 | 02612 | 02622 |
| | 3P+N+E | >50(100-300Hz) | 10 | | 07682 | - | - |
| | | >50(301-500Hz) | 2 | | 07603 | - | - |
| | | 57/100 75/130 | 4 | | 01603 | - | - |
| | | 200/346 240/415 | 6 | | 03603 | 03613 | 03623 |
| | | 277/480 288/500 | 7 | | 05603 | - | - |
| 120/208 144/250 | 9 | | 02603 | - | - | | |
| 32A | 2P+E | >50(301-500Hz) | 2 | | 07604 | - | - |
| | | 100/130 | 4 | | 01604 | 01614 | 01624 |
| | | 200/250 | 6 | | 02604 | 02614 | 02624 |
| | | 480/500 | 7 | | 05604 | - | - |
| | | 380/415 | 9 | | 03604 | - | - |
| | 3P+E | >50(301-500Hz) | 2 | | 07605 | - | - |
| | | 440 (60Hz) | 3 | | 07615 | - | - |
| | | 100/130 | 4 | | 01605 | - | - |
| | | 380/415 | 6 | | 03605 | 03615 | 03625 |
| | | 480/500 | 7 | | 05605 | 05615 | 05625 |
| | 3P+N+E | 200/250 | 9 | | 02605 | 02615 | 02625 |
| | | >50(100-300Hz) | 10 | | 07685 | - | - |
| | | >50(301-500Hz) | 2 | | 07606 | - | - |
| | | 57/100 75/130 | 4 | | 01606 | - | - |
| | | 200/346 240/415 | 6 | | 03606 | 03616 | 03626 |
| 277/480 288/500 | 7 | | 05606 | - | - | | |
| 120/208 144/250 | 9 | | 02606 | - | - | | |
| 63A | 2P+E | 100/130 | 4 | | 01651 | 01661 | 01671 |
| | | 200/250 | 6 | | 02651 | 02661 | 02671 |
| | 3P+E | 380/415 | 6 | | 03652 | 03662 | 03672 |
| | | 480/500 | 7 | | 05652 | 05662 | 05672 |
| | | 200/250 | 9 | | 02652 | 02662 | 02672 |
| 3P+N+E | 200/346 240/415 | 6 | | 03653 | 03663 | 03673 | |
| 125A | 2P+E | 100/130 | 4 | | 01654 | 01664 | 01674 |
| | | 200/250 | 6 | | 02654 | 02664 | 02674 |
| | 3P+E | 380/415 | 6 | | 03655 | 03665 | 03675 |
| | | 480/500 | 7 | | 05655 | 05665 | 05675 |
| | | 200/250 | 9 | | 02655 | 02665 | 02675 |
| 3P+N+E | 200/346 240/415 | 6 | | 03656 | 03666 | 03676 | |

Available with nickel-plated contacts for marine environments.
 Ask us about price and delivery terms.
 63A and 125A plugs with pilot contact.

* Flush-fit plugs:
 - 16 A - 32 A: Angled IP67.
 - 63 A - 125 A: Sloping.

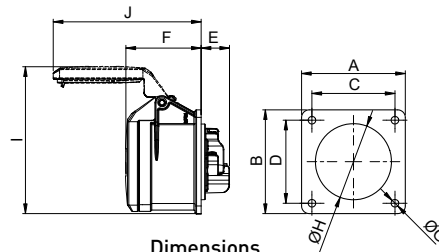
See dimensions on pages: 21-23.

LOW VOLTAGE

50/60 Hz industrial plugs and sockets dimensions

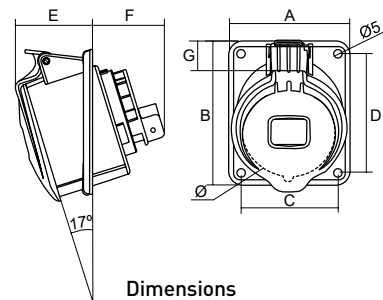
DIMENSIONS

IP44 straight flush-fit sockets



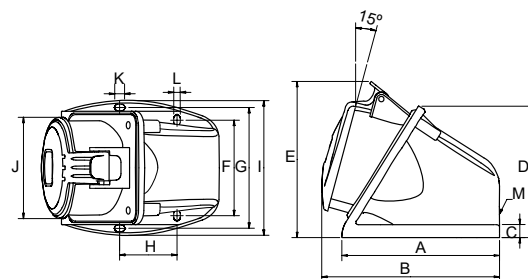
| Current | Poles | Dimensions | | | | | | | |
|---------|--------|------------|-------|----|----|-----|----|-----|-----|
| | | (AxB) | (CxD) | E | F | G | H | I | J |
| 16A | 2P+E | 70x70 | 56x56 | 21 | 55 | 5,5 | 43 | 87 | 101 |
| | 3P+E | 70x70 | 56x56 | 21 | 55 | 5,5 | 45 | 101 | 101 |
| | 3P+N+E | 70x70 | 56x56 | 21 | 55 | 5,5 | 55 | 105 | 107 |
| 32A | 2P+E | 70x70 | 56x56 | 23 | 67 | 5,5 | 55 | 112 | 122 |
| | 3P+E | 70x70 | 56x56 | 23 | 67 | 5,5 | 55 | 112 | 122 |
| | 3P+N+E | 70x70 | 56x56 | 23 | 67 | 5,5 | 58 | 108 | 136 |

IP44 sloping flush-fit sockets



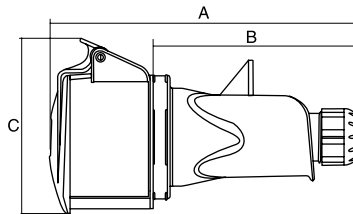
| Current | Poles | Dimensions | | | | | | | |
|---------|--------|------------|----|----|----|----|----|----|----|
| | | A | B | C | D | E | F | Ø | G |
| 16A | 2P+E | 66 | 83 | 50 | 65 | 43 | 43 | 53 | 17 |
| | 3P+E | 66 | 83 | 50 | 65 | 43 | 43 | 60 | 14 |
| | 3P+N+E | 80 | 96 | 64 | 79 | 43 | 47 | 66 | 15 |
| 32A | 2P+E | 80 | 96 | 64 | 79 | 50 | 51 | 68 | 14 |
| | 3P+E | 80 | 96 | 64 | 79 | 50 | 51 | 68 | 14 |
| | 3P+N+E | 80 | 96 | 64 | 79 | 50 | 51 | 74 | 11 |

IP44 wall sockets



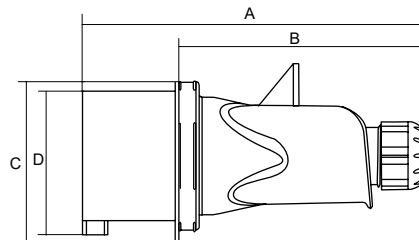
| Current | Poles | Dimensions | | | | | | | | | | | | |
|---------|--------|------------|-----|----|----|-----|------|------|----|-----|------|---|---|---------|
| | | A | B | C | D | E | F | G | H | I | J | K | L | M |
| 16A | 2P+E | 100 | 109 | 10 | 88 | 98 | 53.6 | 76.6 | 40 | 87 | 55.5 | 8 | 5 | M25x1.5 |
| | 3P+E | 100 | 109 | 10 | 88 | 103 | 53.6 | 76.6 | 40 | 87 | 61.8 | 8 | 5 | M25x1.5 |
| | 3P+N+E | 118 | 127 | 10 | 99 | 117 | 71.6 | 90.6 | 43 | 101 | 70 | 8 | 5 | M25x1.5 |
| 32A | 2P+E | 118 | 132 | 10 | 99 | 117 | 71.6 | 90.6 | 43 | 101 | 70 | 8 | 5 | M25x1.5 |
| | 3P+E | 118 | 132 | 10 | 99 | 117 | 71.6 | 90.6 | 43 | 101 | 70 | 8 | 5 | M25x1.5 |
| | 3P+N+E | 118 | 132 | 10 | 99 | 120 | 71.6 | 90.6 | 43 | 101 | 76.7 | 8 | 5 | M25x1.5 |

IP44 wander sockets



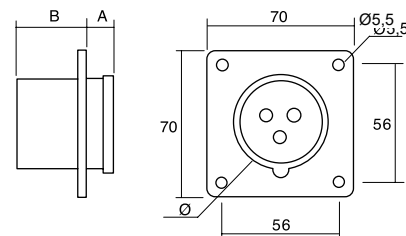
| Current | Poles | Dimensions | | |
|---------|--------|------------|-----|-----|
| | | A | B | C |
| 16A | 2P+E | 151 | 96 | 82 |
| | 3P+E | 156 | 106 | 86 |
| | 3P+N+E | 161 | 111 | 98 |
| 32A | 2P+E | 171 | 111 | 98 |
| | 3P+E | 171 | 111 | 98 |
| | 3P+N+E | 178 | 118 | 102 |

IP44 wander plugs



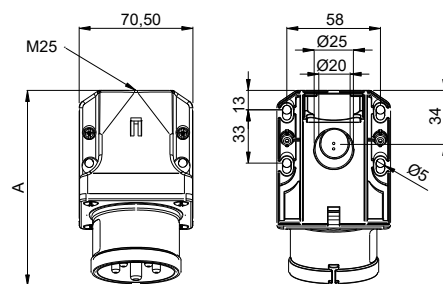
| Current | Poles | Dimensions | | | |
|---------|--------|------------|-----|----|----|
| | | A | B | C | D |
| 16A | 2P+E | 134 | 96 | 55 | 54 |
| | 3P+E | 144 | 106 | 61 | 58 |
| | 3P+N+E | 149 | 111 | 69 | 66 |
| 32A | 2P+E | 156 | 111 | 72 | 66 |
| | 3P+E | 156 | 111 | 72 | 66 |
| | 3P+N+E | 163 | 118 | 78 | 72 |

IP44 straight flush-fit plugs



| Current | Poles | Dimensions | | |
|---------|--------|------------|----|----|
| | | A | B | Ø |
| 16A | 2P+E | 21 | 42 | 43 |
| | 3P+E | 21 | 42 | 45 |
| | 3P+N+E | 20 | 42 | 55 |
| 32A | 2P+E | 21 | 51 | 55 |
| | 3P+E | 21 | 51 | 55 |
| | 3P+N+E | 21 | 51 | 55 |

IP44 wall plugs



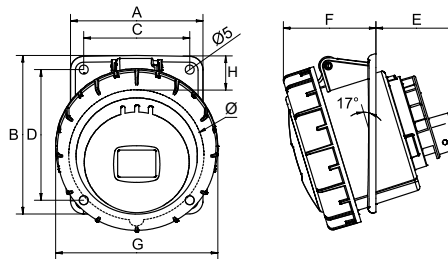
B= Height. 15°= Slope

| Current | Poles | Dimensions | | |
|---------|--------|------------|----|----|
| | | A | B | M |
| 16A | 2P+E | 120 | 76 | 25 |
| | 3P+E | 121 | 76 | 25 |
| | 3P+N+E | 122 | 79 | 25 |
| 32A | 2P+E | 131 | 82 | 25 |
| | 3P+E | 131 | 82 | 25 |
| | 3P+N+E | 132 | 85 | 25 |

LOW VOLTAGE

50/60 Hz industrial plugs and sockets dimensions

IP66-IP67 sloping flush-fit sockets



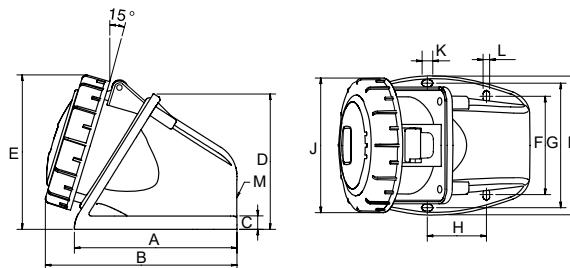
Current

Poles

Dimensions

| Current | Poles | Dimensions | | | | | | | | Ø Oblong (H X W) |
|---------|--------|------------|-----|-----|-----|----|----|-----|----|------------------|
| | | A | B | C | D | E | F | G | H | |
| 16A | 2P+E | 66 | 83 | 50 | 65 | 43 | 50 | 69 | 17 | 53 |
| | 3P+E | 66 | 83 | 50 | 65 | 43 | 50 | 77 | 14 | 60 |
| | 3P+N+E | 80 | 98 | 64 | 79 | 43 | 50 | 89 | 15 | 66 |
| 32A | 2P+E | 80 | 96 | 64 | 79 | 50 | 56 | 89 | 14 | 68 |
| | 3P+E | 80 | 96 | 64 | 79 | 50 | 56 | 89 | 14 | 68 |
| | 3P+N+E | 80 | 96 | 64 | 79 | 50 | 56 | 98 | 11 | 74 |
| 63A | 2P+E | 100 | 112 | 80 | 88 | 64 | 80 | 109 | - | 92x82 |
| | 3P+E | 100 | 112 | 80 | 88 | 64 | 80 | 109 | - | 92x82 |
| | 3P+N+E | 100 | 112 | 80 | 88 | 64 | 80 | 109 | - | 92x82 |
| 125A | 2P+E | 120 | 130 | 100 | 108 | 92 | 77 | 124 | - | 102x90 |
| | 3P+E | 120 | 130 | 100 | 108 | 92 | 77 | 124 | - | 102x90 |
| | 3P+N+E | 120 | 130 | 100 | 108 | 92 | 77 | 124 | - | 102x90 |

IP66-IP67 wall sockets



Current

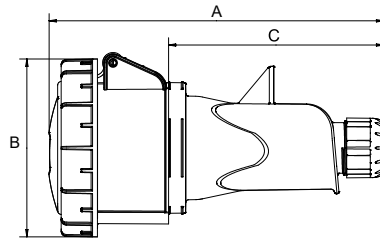
Poles

Dimensions

| Current | Poles | Dimensions | | | | | | | | | | | | |
|---------|--------|------------|-----|----|----|-----|------|------|-----|-----|----|---|---|-----------|
| | | A | B | C | D | E | F | G | H | I | J | K | L | M |
| 16A | 2P+E | 100 | 117 | 10 | 88 | 90 | 53.6 | 76.6 | 40 | 87 | 69 | 8 | 5 | M25x1.5 |
| | 3P+E | 100 | 117 | 10 | 88 | 95 | 53.6 | 76.6 | 40 | 87 | 77 | 8 | 5 | M25x1.5 |
| | 3P+N+E | 118 | 135 | 10 | 99 | 108 | 71.6 | 76.6 | 43 | 101 | 89 | 8 | 5 | M25x1.5 |
| 32A | 2P+E | 118 | 140 | 10 | 99 | 108 | 71.6 | 90.6 | 43 | 101 | 89 | 8 | 5 | M25x1.5 |
| | 3P+E | 118 | 140 | 10 | 99 | 108 | 71.6 | 90.6 | 43 | 101 | 89 | 8 | 5 | M25x1.5 |
| | 3P+N+E | 118 | 140 | 10 | 99 | 111 | 71.6 | 90.6 | 43 | 101 | 98 | 8 | 5 | M25x1.5 |
| 63A | 2P+E | 170 | 213 | - | - | 173 | 104 | - | 136 | 118 | - | - | 6 | M40+2xM32 |
| | 3P+E | 170 | 213 | - | - | 173 | 104 | - | 136 | 118 | - | - | 6 | M40+2xM32 |
| | 3P+N+E | 170 | 213 | - | - | 173 | 104 | - | 136 | 118 | - | - | 6 | M40+2xM32 |
| 125A | 2P+E | 262 | 322 | - | - | 205 | 140 | - | 240 | 162 | - | - | 8 | M63+2xM40 |
| | 3P+E | 262 | 322 | - | - | 205 | 140 | - | 240 | 162 | - | - | 8 | M63+2xM40 |
| | 3P+N+E | 262 | 322 | - | - | 205 | 140 | - | 240 | 162 | - | - | 8 | M63+2xM40 |

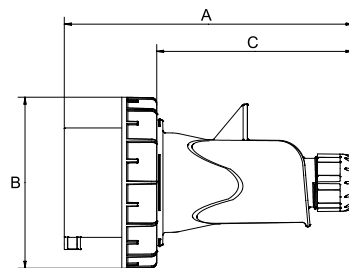
Photo and drawing representative for 16/32A.

IP66-IP67 wander sockets



| Current | Poles | Dimensions | | |
|---------|--------|------------|-----|-----|
| | | A | B | C |
| 16A | 2P+E | 156 | 69 | 96 |
| | 3P+E | 160 | 77 | 106 |
| | 3P+N+E | 172 | 89 | 111 |
| 32A | 2P+E | 182 | 89 | 111 |
| | 3P+E | 182 | 89 | 111 |
| | 3P+N+E | 189 | 98 | 118 |
| 63A | 2P+E | 269 | 114 | - |
| | 3P+E | 269 | 114 | - |
| | 3P+N+E | 269 | 114 | - |
| 125A | 2P+E | 287 | 124 | - |
| | 3P+E | 287 | 124 | - |
| | 3P+N+E | 287 | 124 | - |

IP66-IP67 wander plugs

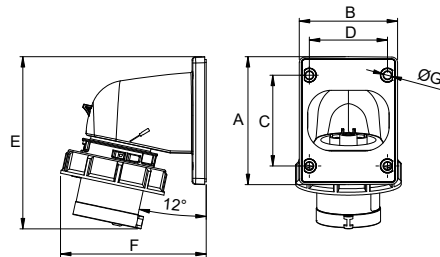


| Current | Poles | Dimensions | | |
|---------|--------|------------|-----|-----|
| | | A | B | C |
| 16A | 2P+E | 134 | 69 | 96 |
| | 3P+E | 144 | 77 | 106 |
| | 3P+N+E | 149 | 89 | 111 |
| 32A | 2P+E | 156 | 89 | 111 |
| | 3P+E | 156 | 89 | 111 |
| | 3P+N+E | 163 | 98 | 118 |
| 63A | 2P+E | 257 | 114 | - |
| | 3P+E | 257 | 114 | - |
| | 3P+N+E | 257 | 114 | - |
| 125A | 2P+E | 270 | 131 | - |
| | 3P+E | 270 | 131 | - |
| | 3P+N+E | 270 | 131 | - |

LOW VOLTAGE

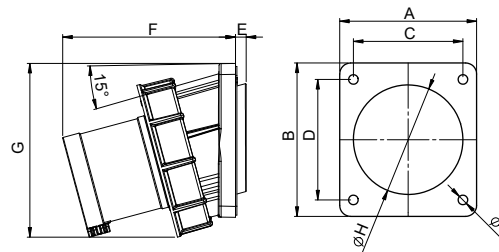
50/60 Hz industrial plugs and sockets dimensions

IP67 angled flush-fit plugs



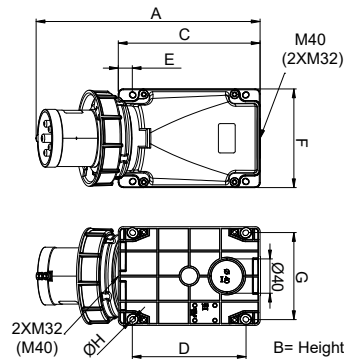
| Current | Poles | Dimensions | | | | | | |
|---------|--------|------------|----|----|----|-----|-----|---|
| | | A | B | C | D | E | F | G |
| 16A | 2P+E | 86 | 66 | 61 | 53 | 116 | 99 | 5 |
| | 3P+E | 86 | 66 | 61 | 53 | 117 | 103 | 5 |
| | 3P+N+E | 100 | 90 | 85 | 77 | 153 | 107 | 5 |
| 32A | 2P+E | 100 | 90 | 85 | 77 | 163 | 110 | 5 |
| | 3P+E | 100 | 90 | 85 | 77 | 163 | 110 | 5 |
| | 3P+N+E | 100 | 90 | 85 | 77 | 164 | 114 | 5 |

IP66-IP67 sloping flush-fit plugs



| Current | Poles | Dimensions | | | | | | | | |
|---------|--------|------------|-----|-----|-----|---|-----|-----|-----|---|
| | | A | B | C | D | E | F | G | H | I |
| 63A | 2P+E | 100 | 112 | 80 | 88 | 8 | 127 | 127 | 80 | 7 |
| | 3P+E | 100 | 112 | 80 | 88 | 8 | 127 | 127 | 80 | 7 |
| | 3P+N+E | 100 | 112 | 80 | 88 | 8 | 127 | 127 | 80 | 7 |
| 125A | 2P+E | 120 | 130 | 100 | 108 | 8 | 139 | 145 | 100 | 7 |
| | 3P+E | 120 | 130 | 100 | 108 | 8 | 139 | 145 | 100 | 7 |
| | 3P+N+E | 120 | 130 | 100 | 108 | 8 | 139 | 145 | 100 | 7 |

IP66-IP67 wall plugs



| Current | Poles | Dimensions | | | | | | | |
|---------|--------|------------|-----|-----|-----|----|-----|-----|----|
| | | A | B | C | D | E | F | G | ØH |
| 16A | 2P+E | 136 | 99 | 103 | 47 | - | 71 | 70 | 5 |
| | 3P+E | 138 | 94 | 100 | 47 | - | 79 | 70 | 5 |
| | 3P+N+E | 140 | 100 | 103 | 47 | - | 87 | 70 | 5 |
| 32A | 2P+E | 150 | 104 | 103 | 47 | - | 93 | 70 | 5 |
| | 3P+E | 153 | 104 | 103 | 47 | - | 93 | 70 | 5 |
| | 3P+N+E | 152 | 102 | 103 | 47 | - | 102 | 70 | 5 |
| 63A | 2P+E | 271 | 175 | 170 | 136 | 17 | 118 | 104 | 6 |
| | 3P+E | 271 | 175 | 170 | 136 | 17 | 118 | 104 | 6 |
| | 3P+N+E | 271 | 175 | 170 | 136 | 17 | 118 | 104 | 6 |
| 125A | 2P+E | 387 | 209 | 262 | 240 | 11 | 162 | 142 | 8 |
| | 3P+E | 387 | 209 | 262 | 240 | 11 | 162 | 142 | 8 |
| | 3P+N+E | 387 | 209 | 262 | 240 | 11 | 162 | 142 | 8 |

Hose diameters for IP44-IP67 plugs and sockets

| Current | Poles | Dimensions | |
|---------|--------|-----------------------|-----------------------|
| | | MINIMUM DIAMETER (mm) | MAXIMUM DIAMETER (mm) |
| 16A | 2P+E | 8.1 | 13 |
| | 3P+E | 8.8 | 14 |
| | 3P+N+E | 10 | 15.3 |
| 32A | 2P+E | 11 | 17.3 |
| | 3P+E | 12.5 | 19.3 |

INTERLOCKING

50/60 Hz industrial sockets



INTERLOCKING SOCKETS

Product series

- IP44-IP54 / IP66-IP67 flush-fit sockets.
- IP44-IP54 / IP66-IP67 wall sockets.
- IP66-IP67 Wall sockets with DIN rail.

- Current: 16 A – 32 A – 63 A.
- Voltage: 110 V – 220 V – 380 V – 500 V.
- Poles: 2P+E – 3P+E – 3P+N+E.
- Time code: 4h - 6h.



Material

- Plastic parts: Polyamide 6.
- Contacts: Copper-zinc alloy.
- Halogen-free plastic materials.

Main characteristics of the plastic material:

- Excellent resistance to impact.
- High thermal stability.
- Very good insulating qualities.
- High disruptive force.
- High resistance to extreme environmental agents.
- High resistance to chemical products and agents.

Main characteristics of the contacts:

- High-capacity electrical conduction: 15 mm²/(Ohm mm²).
- High corrosion resistance in industrial areas.
- Possibility of requesting nickel-plated contacts to increase resistance in marine, steamy environments, etc. (Add /NC to the reference).

Supply

- Supplied in an individual box per packaging multiple.

Technical characteristics

- Available in flush-fit and surface version.
- Sockets with mechanical interlocking with a compact design that saves storage space.
- All the components are assembled on the top part.
- Mechanical interlocking: when the plug is inserted it is blocked, and when the plug is removed, the socket is blocked.
- The interlocking socket with DIN rail has room for five modules.

IP44-IP54-IP66-IP67 low voltage interlocking sockets



| Current | Poles | Voltage (V) | Time code | | | | | |
|---------|--------|-------------------|-----------|---------------------|----------------|---------------------|----------------|------------------------------|
| | | | | IP44-IP54 flush-fit | IP44-IP54 wall | IP66-IP67 flush fit | IP66-IP67 wall | IP66-IP67 wall with DIN rail |
| | | | | Reference No. | Reference No. | Reference No. | Reference No. | Reference No. |
| 16A | 2P+E | 100/130 | 4 | 01351 | 01361 | 01811 | 01831 | 01841 |
| | | 200/250 | 6 | 02351 | 02361 | 02811 | 02831 | 02841 |
| | 3P+E | 380/415 | 6 | 03352 | 03362 | 03812 | 03832 | 03842 |
| | 3P+N+E | 200/346 - 240/415 | 6 | 03353 | 03363 | 03813 | 03833 | 03843 |
| 32A | 2P+E | 100/130 | 4 | 01354 | 01364 | 01814 | 01834 | 01844 |
| | | 200/250 | 6 | 02354 | 02364 | 02814 | 02834 | 02844 |
| | 3P+E | 380/415 | 6 | 03355 | 03365 | 03815 | 03835 | 03845 |
| | 3P+N+E | 200/346 - 240/415 | 6 | 03356 | 03366 | 03816 | 03836 | 03846 |
| 63A | 2P+E | 100/130 | 4 | - | - | - | - | 01881 |
| | | 200/250 | 6 | - | - | - | - | 02881 |
| | 3P+E | 380/415 | 6 | - | - | - | 03839 | 03882 |
| | 3P+N+E | 200/346 - 240/415 | 6 | - | - | - | 03840 | 03883 |

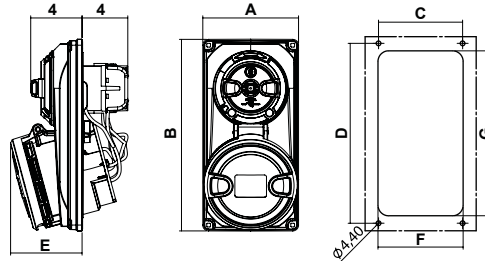
Available with nickel-plated contacts for marine environments. Ask us about price and delivery terms.
See dimensions on pages: 26-27.

INTERLOCKING

50/60 Hz industrial sockets dimensions

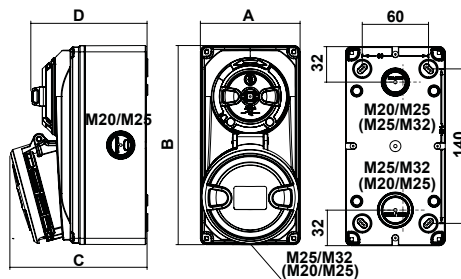
DIMENSIONS

IP44-IP54 flush-fit interlocking sockets



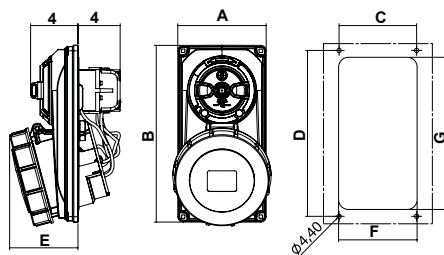
| Current | Poles | Dimensions | | | | | | |
|---------|--------|------------|-----|----|-----|----|----|-----|
| | | A | B | C | D | E | F | G |
| 16A | 2P+E | 90 | 180 | 79 | 169 | 58 | 80 | 155 |
| | 3P+E | 90 | 180 | 79 | 169 | 60 | 80 | 155 |
| | 3P+N+E | 90 | 180 | 79 | 169 | 61 | 80 | 155 |
| 32A | 2P+E | 90 | 180 | 79 | 169 | 66 | 80 | 155 |
| | 3P+E | 90 | 180 | 79 | 169 | 66 | 80 | 155 |
| | 3P+N+E | 90 | 180 | 79 | 169 | 67 | 80 | 155 |

IP44-IP54 wall interlocking sockets



| Current | Poles | Dimensions | | | |
|---------|--------|------------|-----|-----|-----|
| | | A | B | C | D |
| 16A | 2P+E | 90 | 180 | 115 | 105 |
| | 3P+E | 90 | 180 | 117 | 105 |
| | 3P+N+E | 90 | 180 | 118 | 105 |
| 32A | 2P+E | 90 | 180 | 123 | 105 |
| | 3P+E | 90 | 180 | 123 | 105 |
| | 3P+N+E | 90 | 180 | 124 | 105 |

IP66-IP67 flush-fit interlocking sockets



| Current | Poles | Dimensions | | | | | | |
|---------|--------|------------|-----|----|-----|----|----|-----|
| | | A | B | C | D | E | F | G |
| 16A | 2P+E | 90 | 180 | 79 | 169 | 59 | 80 | 155 |
| | 3P+E | 90 | 180 | 79 | 169 | 61 | 80 | 155 |
| | 3P+N+E | 90 | 180 | 79 | 169 | 65 | 80 | 155 |
| 32A | 2P+E | 90 | 180 | 79 | 169 | 67 | 80 | 155 |
| | 3P+E | 90 | 180 | 79 | 169 | 67 | 80 | 155 |
| | 3P+N+E | 90 | 180 | 79 | 169 | 70 | 80 | 155 |

IP66-IP67 wall interlocking sockets

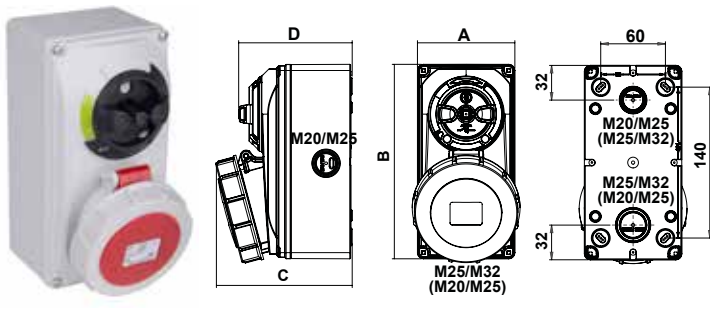


Photo and drawing representative for 16 A - 32 A sockets.

| I | Poles | Dimensions | | | | | | |
|-----|--------|------------|-----|-----|-----|----|-----|----|
| | | A | B | C | D | E | F | ØG |
| 16A | 2P+E | 90 | 180 | 116 | 105 | - | - | - |
| | 3P+E | 90 | 180 | 118 | 105 | - | - | - |
| | 3P+N+E | 90 | 180 | 122 | 105 | - | - | - |
| 32A | 2P+E | 90 | 180 | 124 | 105 | - | - | - |
| | 3P+E | 90 | 180 | 124 | 105 | - | - | - |
| | 3P+N+E | 90 | 180 | 127 | 105 | - | - | - |
| 63A | 3P+E | 162 | 310 | 140 | 240 | 11 | 184 | 9 |
| | 3P+N+E | 162 | 310 | 140 | 240 | 11 | 184 | 9 |

Photo and drawing representative for 16 A - 32 A sockets.

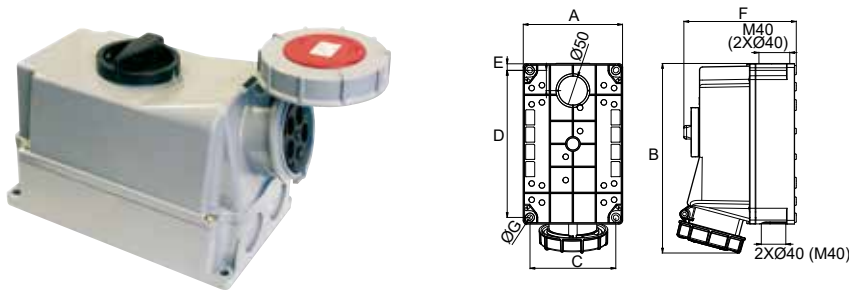


Photo and drawing representative for 63 A sockets.

Photo and drawing representative for 63 A sockets.

IP66-IP67 wall interlocking sockets with DIN rail

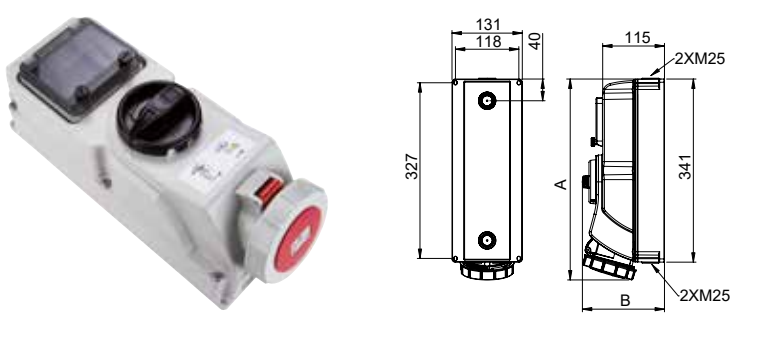


Photo and drawing representative for 16 A - 32 A sockets.

| Current | Poles | Dimensions | | |
|---------|--------|------------|-----|------|
| | | A | B | M |
| 16A | 2P+E | 361 | 153 | 3x25 |
| | 3P+E | 361 | 153 | 3x25 |
| | 3P+N+E | 363 | 153 | 3x25 |
| 32A | 2P+E | 371 | 153 | 3x25 |
| | 3P+E | 371 | 153 | 3x25 |
| | 3P+N+E | 372 | 153 | 3x25 |
| 63A | 2P+E | 496 | 195 | - |
| | 3P+E | 496 | 195 | - |
| | 3P+N+E | 496 | 195 | - |

Photo and drawing representative for 16 A - 32 A sockets.

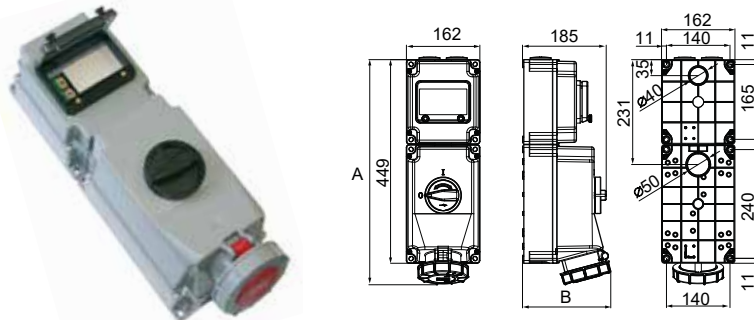


Photo and drawing representative for 63 A sockets.

Photo and drawing representative for 63 A sockets.

EXTRA LOW VOLTAGE

50/60 Hz industrial plugs and sockets

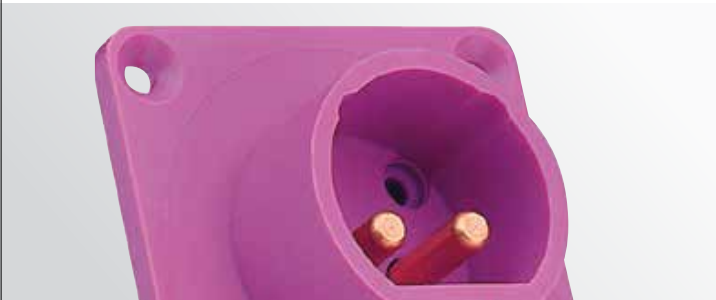


EXTRA LOW VOLTAGE

Product series

- IP44 wander sockets.
- IP44 straight flush-fit sockets.
- IP44 wall sockets.
- IP44 wander plugs.
- IP44 straight flush-fit plugs.
- IP44 wall plugs.

- Current: 16A – 32A.
- Voltage: 24V – 42V / 50/60 Hz – 100 up to 500 Hz.
- Poles: 2P+E – 3P+E.
- Time code: NR. – 2h – 3h – 4h – 10h – 11h – 12h.



Material

- Plastic parts: Polyamide 6.
- Contacts: Copper-zinc alloy.
- Halogen-free plastic materials.

Main characteristics of the plastic material:

- Excellent resistance to impact.
- High thermal stability.
- Very good insulating qualities.
- High disruptive force.
- High resistance to extreme environmental agents.
- High resistance to chemical products and agents.

Main characteristics of the contacts:

- High-capacity electrical conduction: 15 mm²/(Ohm mm²).
- High corrosion resistance in industrial areas.

Supply

- Supplied in an individual box per packaging multiple.

Technical characteristics

- They feature an ergonomic design that makes it extremely easy for the installer to hold and handle them.
- Clipping system opening and closing, with a tool required to access live parts, in compliance with regulations.
- Easy access to cable connection and quick installation.
- Protection from jolts thanks to strong cable sealing.
- Cable diameters from 8 to 24 mm can be used.

IP44 extra low voltage plugs and sockets



| I | Poles | Voltage (V) | Frequency (Hz) | Time code | | Wander sockets | Straight flush-fit sockets | Wall sockets | Wander plugs | Straight flush-fit plugs | Wall plugs |
|-----|-------|-------------|----------------|-----------|---|----------------|----------------------------|---------------|---------------|--------------------------|---------------|
| | | | | | | Reference No. | Reference No. | Reference No. | Reference No. | Reference No. | Reference No. |
| 16A | 2P | 24 | 50/60 | nr. | ■ | 08201 | 08311 | 08321 | 08101 | 08111 | 08121 |
| | | 42 | 50/60 | 12 | ■ | 09201 | 09311 | 09321 | 09101 | 09111 | 09121 |
| | | 24/42 | 100/200 | 4 | ■ | 08449 | 08465 | 08481 | 08401 | 08417 | 08433 |
| | | 24/42 | 300 | 2 | ■ | 08451 | 08467 | 08483 | 08403 | 08419 | 08435 |
| | | 24/42 | 400 | 3 | ■ | 08453 | 08469 | 08485 | 08405 | 08421 | 08437 |
| | | 24/42 | 400/500 | 11 | ■ | 08455 | 08471 | 08487 | 08407 | 08423 | 08439 |
| | | 24/42 | dc | 10 | ■ | 06201 | 06311 | 06321 | 06101 | 06111 | 06121 |
| | 3P | 24 | 50/60 | nr. | ■ | 08202 | 08312 | 08322 | 08102 | 08112 | 08122 |
| | | 42 | 50/60 | 12 | ■ | 09202 | 09312 | 09322 | 09102 | 09112 | 09122 |
| | | 24/42 | 100/200 | 4 | ■ | 08450 | 08466 | 08482 | 08402 | 08418 | 08434 |
| | | 24/42 | 300 | 2 | ■ | 08452 | 08468 | 08484 | 08404 | 08420 | 08436 |
| | | 24/42 | 400 | 3 | ■ | 08454 | 08470 | 08486 | 08406 | 08422 | 08438 |
| | | 24/42 | 400/500 | 11 | ■ | 08456 | 08472 | 08488 | 08408 | 08424 | 08440 |
| | | 24/42 | dc | 10 | ■ | 06202 | 06312 | 06322 | 06102 | 06112 | 06122 |
| 32A | 2P | 24 | 50/60 | nr. | ■ | 08204 | 08314 | 08324 | 08104 | 08114 | 08124 |
| | | 42 | 50/60 | 12 | ■ | 09204 | 09314 | 09324 | 09104 | 09114 | 09124 |
| | | 24/42 | 100/200 | 4 | ■ | 08457 | 08473 | 08489 | 08409 | 08425 | 08441 |
| | | 24/42 | 300 | 2 | ■ | 08459 | 08475 | 08491 | 08411 | 08427 | 08443 |
| | | 24/42 | 400 | 3 | ■ | 08461 | 08477 | 08493 | 08413 | 08429 | 08445 |
| | | 24/42 | 400/500 | 11 | ■ | 08463 | 08479 | 08495 | 08415 | 08431 | 08447 |
| | | 24/42 | dc | 10 | ■ | 06204 | 06314 | 06324 | 06104 | 06114 | 06124 |
| | 3P | 24 | 50/60 | nr. | ■ | 08205 | 08315 | 08325 | 08105 | 08115 | 08125 |
| | | 42 | 50/60 | 12 | ■ | 09205 | 09315 | 09325 | 09105 | 09115 | 09125 |
| | | 24/42 | 100/200 | 4 | ■ | 08458 | 08474 | 08490 | 08410 | 08426 | 08442 |
| | | 24/42 | 300 | 2 | ■ | 08460 | 08476 | 08492 | 08412 | 08428 | 08444 |
| | | 24/42 | 400 | 3 | ■ | 08462 | 08478 | 08494 | 08414 | 08430 | 08446 |
| | | 24/42 | 400/500 | 11 | ■ | 08464 | 08480 | 08496 | 08416 | 08432 | 08448 |
| | | 24/42 | dc | 10 | ■ | 06205 | 06315 | 06325 | 06105 | 06115 | 06125 |

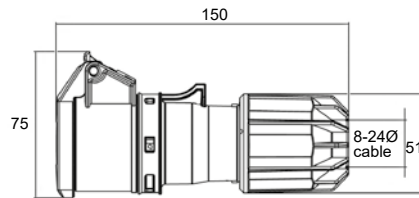
See dimensions on pages: 30-31.

EXTRA LOW VOLTAGE

50/60 Hz industrial plugs and sockets dimensions

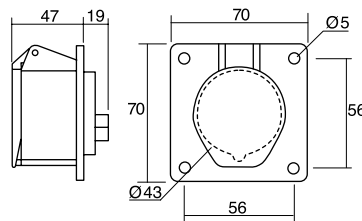
DIMENSIONS

IP44 wander sockets



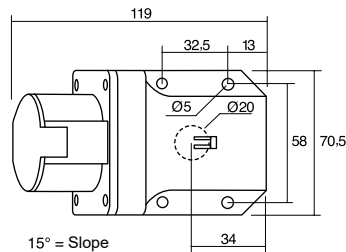
| Current | Poles | Dimensions | |
|---------|-------|------------|--------|
| | | HEIGHT | LENGTH |
| 16A | 2P | 75 | 150 |
| | 3P | 75 | 150 |
| 32A | 2P | 75 | 150 |
| | 3P | 75 | 150 |

IP44 straight flush-fit sockets



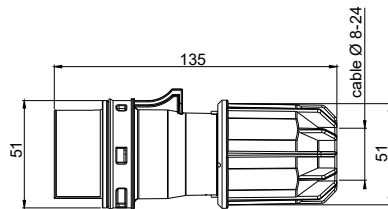
| Current | Poles | Dimensions | | |
|---------|-------|------------|-------|-------|
| | | HEIGHT | WIDTH | DEPTH |
| 16A | 2P | 70 | 70 | 66 |
| | 3P | 70 | 70 | 66 |
| 32A | 2P | 70 | 70 | 66 |
| | 3P | 70 | 70 | 66 |

IP44 wall sockets



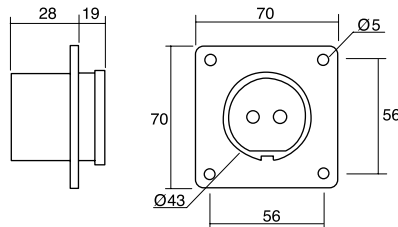
| Current | Poles | Dimensions | | |
|---------|-------|------------|-------|--------|
| | | HEIGHT | WIDTH | LENGTH |
| 16A | 2P | 85 | 70.5 | 119 |
| | 3P | 85 | 70.5 | 119 |
| 32A | 2P | 85 | 70.5 | 119 |
| | 3P | 85 | 70.5 | 119 |

IP44 wander plugs



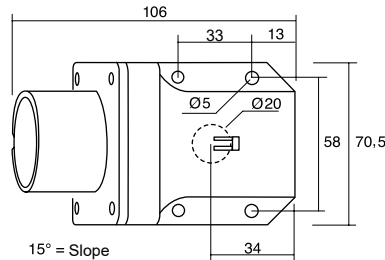
| Current | Poles | Dimensions | |
|---------|-------|------------|--------|
| | | HEIGHT | LENGTH |
| 16A | 2P | 51 | 135 |
| | 3P | 51 | 135 |
| 32A | 2P | 51 | 135 |
| | 3P | 51 | 135 |

IP44 straight flush-fit plugs



| Current | Poles | Dimensions | | |
|---------|-------|------------|-------|-------|
| | | HEIGHT | WIDTH | DEPTH |
| 16A | 2P | 70 | 70 | 47 |
| | 3P | 70 | 70 | 47 |
| 32A | 2P | 70 | 70 | 47 |
| | 3P | 70 | 70 | 47 |

IP44 wall plugs



| Current | Poles | Dimensions | | |
|---------|-------|------------|-------|-------|
| | | HEIGHT | WIDTH | DEPTH |
| 16A | 2P | 77 | 70.5 | 106 |
| | 3P | 77 | 70.5 | 106 |
| 32A | 2P | 77 | 70.5 | 106 |
| | 3P | 77 | 70.5 | 106 |



IDE ELECTRIC

Head office

Leonardo da Vinci 2
Pol. Ind. Los Huertos
E-50800 Zuera (Zaragoza)
SPAIN

Warehouse and logistics

Guttemberg 48
Pol. Ind. Los Huertos
E-50800 Zuera (Zaragoza)
SPAIN

Phone: +34 976 451 080

E-mail: ide@ide.es

Web: www.ide.es

